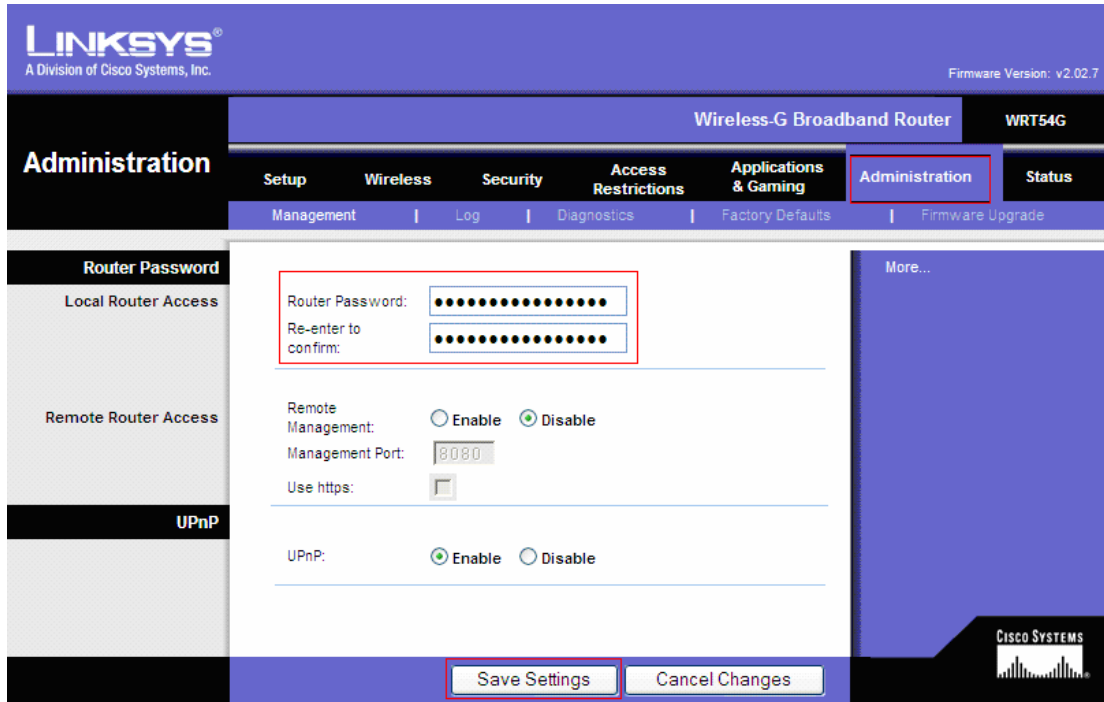


The router make used in this explanation is Linksys WRT54G. Nomenclatures used by different manufacturers may differ. However, the basic method for enhancing security settings remains the same.

1) Change the default password

Click on **“Administration”** >> Type the New Router Password >> Re-enter same password to confirm >> **“Save Settings”**



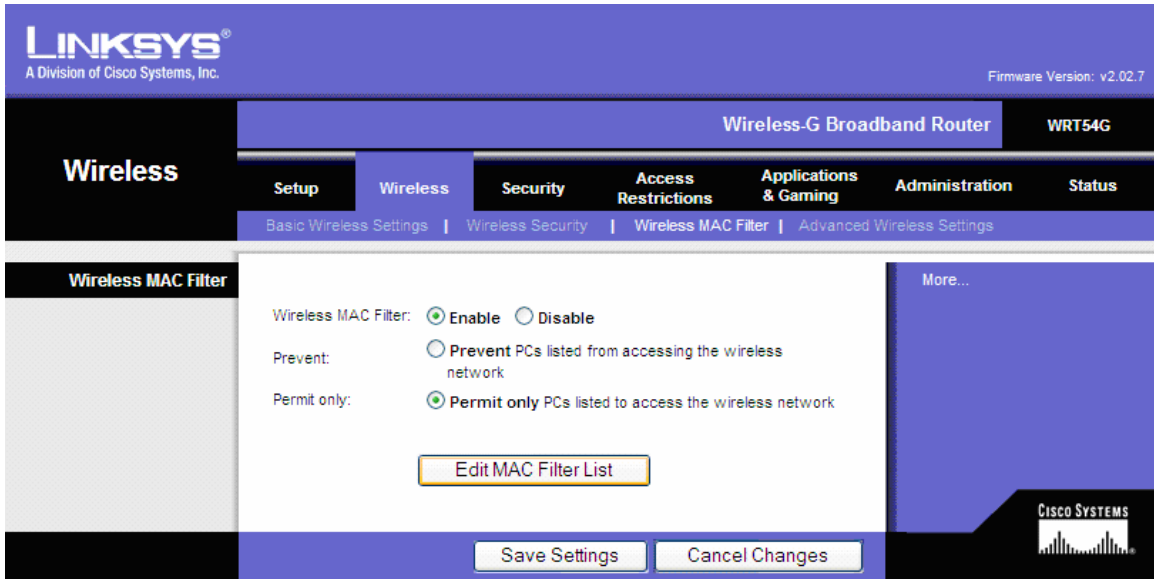
The screenshot displays the Linksys WRT54G router administration interface. The top navigation bar includes 'Administration' (highlighted in red), 'Setup', 'Wireless', 'Security', 'Access Restrictions', 'Applications & Gaming', and 'Status'. Below this, a secondary navigation bar shows 'Management', 'Log', 'Diagnostics', 'Factory Defaults', and 'Firmware Upgrade'. The main content area is titled 'Router Password' and contains the following fields and options:

- Router Password:** A text input field with 12 dots, highlighted in red.
- Re-enter to confirm:** A text input field with 12 dots, highlighted in red.
- Remote Management:** Radio buttons for 'Enable' and 'Disable' (selected).
- Management Port:** A text input field containing '8080'.
- Use https:** A checkbox that is unchecked.
- UPnP:** Radio buttons for 'Enable' (selected) and 'Disable'.

At the bottom of the page, there are two buttons: 'Save Settings' (highlighted in red) and 'Cancel Changes'. The Cisco Systems logo is visible in the bottom right corner.

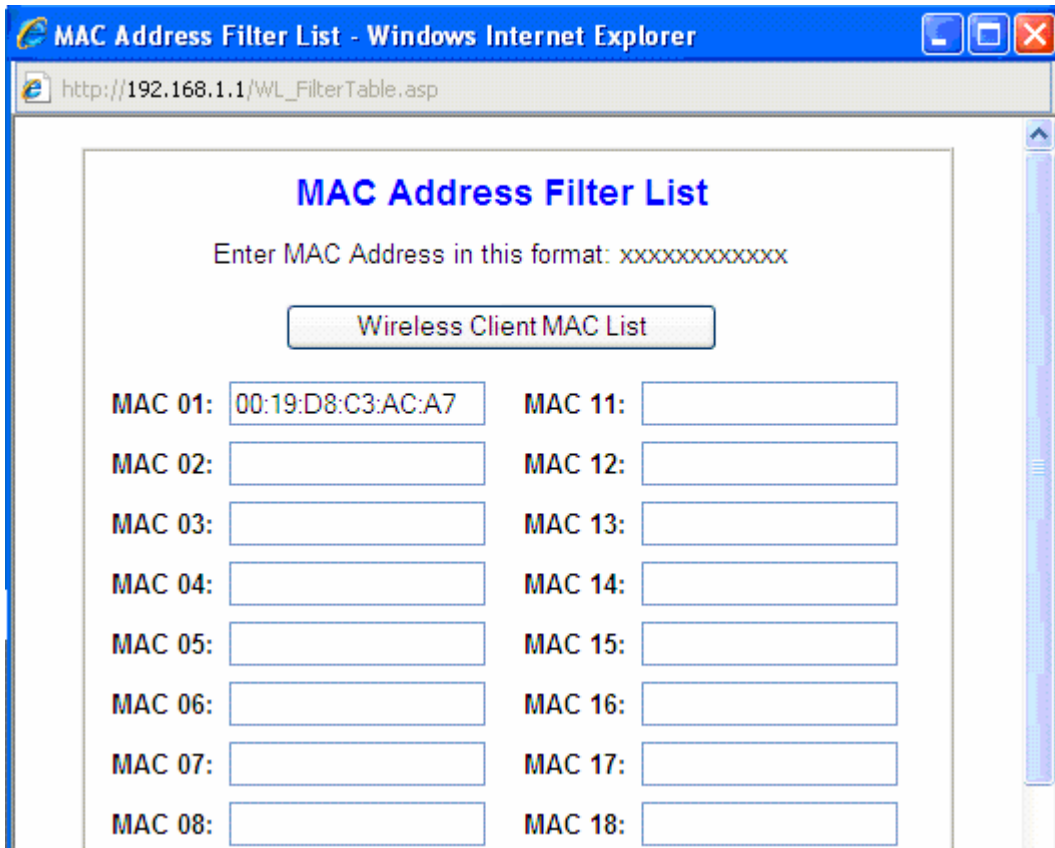
2) Enable Wireless MAC Filtering

Click on **“Security”** >> **“Wireless MAC Filter”** >> Click on **“Enable”** Wireless Mac Filter >> Click On **“Permit Only PCs”** >> Click on **“Edit MAC Filter List”** Tab >> After entering MAC of PC in the list (As given in Below Slide), click on **“Save Settings”**:



How to Edit MAC Filter List -

Enter MAC address of your Laptop /PC in the list. You can add multiple device's MAC in the list. After entering all MAC scroll down and click on **“Save Settings”**



MAC 23:	<input type="text"/>	MAC 33:	<input type="text"/>
MAC 24:	<input type="text"/>	MAC 34:	<input type="text"/>
MAC 25:	<input type="text"/>	MAC 35:	<input type="text"/>
MAC 26:	<input type="text"/>	MAC 36:	<input type="text"/>
MAC 27:	<input type="text"/>	MAC 37:	<input type="text"/>
MAC 28:	<input type="text"/>	MAC 38:	<input type="text"/>
MAC 29:	<input type="text"/>	MAC 39:	<input type="text"/>
MAC 30:	<input type="text"/>	MAC 40:	<input type="text"/>

3) Do not Broadcast the SSID

Click on “Wireless” >> “Basic Security Settings” >> Click on “Disable” Wireless SSID Broadcast >> “Save Settings”

LINKSYS
A Division of Cisco Systems, Inc. Firmware Version: v2.02.7

Wireless-G Broadband Router **WRT54G**

Wireless

Setup | **Wireless** | Security | Access Restrictions | Applications & Gaming | Administration | Status

Basic Wireless Settings | Wireless Security | Wireless MAC Filter | Advanced Wireless Settings

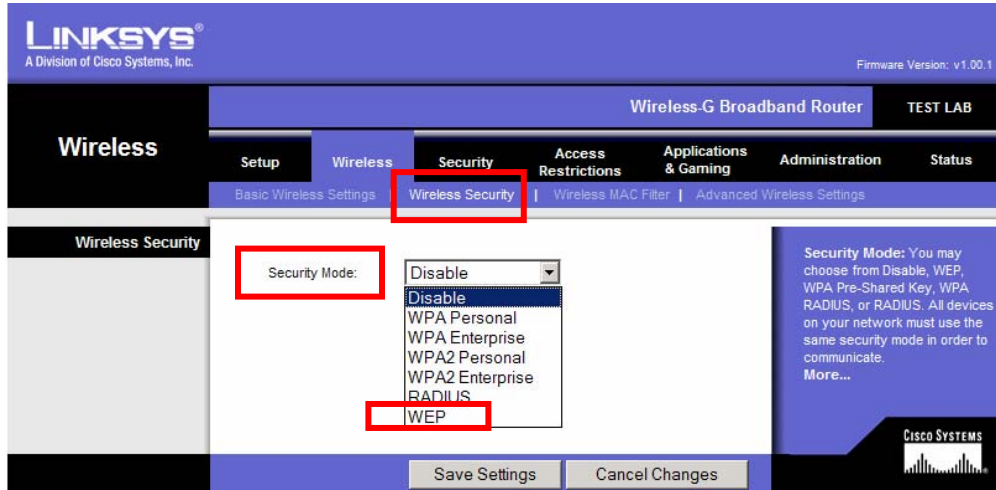
Wireless Network

Wireless Network Mode:
 Wireless Network Name (SSID):
 Wireless Channel:
 Wireless SSID Broadcast: Enable Disable

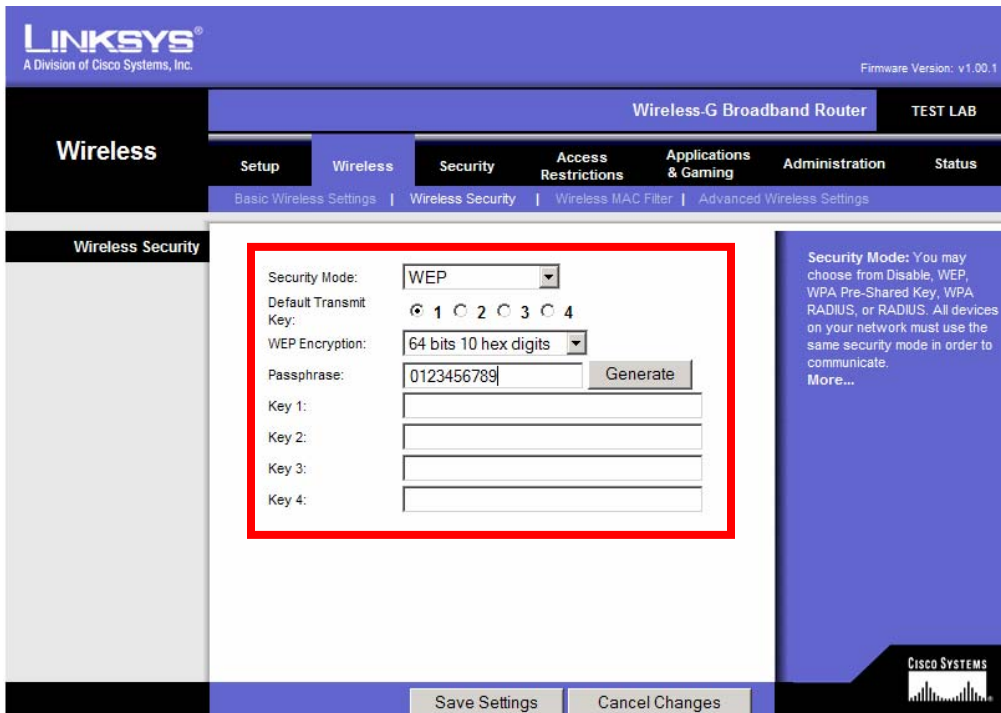
More...
 CISCO SYSTEMS

4) Enable Encryption

Step1. To enable Encryption, select the “**Wireless Security**” tab under “**Wireless**” option.



Step2. Select the “**WEP**” option in “**Security Mode**”.



Step3. Enter the “**Passphrase**” e.g. 0123456789 and click the “**Generate**” tab.

LINKSYS®
A Division of Cisco Systems, Inc. Firmware Version: v1.00.1

Wireless-G Broadband Router TEST LAB

Wireless

Setup Wireless Security Access Restrictions Applications & Gaming Administration Status

Basic Wireless Settings | Wireless Security | Wireless MAC Filter | Advanced Wireless Settings

Wireless Security

Security Mode: WEP

Default Transmit Key: 1

WEP Encryption: 64 bits 10 hex digits

Passphrase: 0123456789 Generate

Key 1: 113EEAC34F

Key 2: 527FC82F22

Key 3: 00B462ECBF

Key 4: 5DF1E13D15

Security Mode: You may choose from Disable, WEP, WPA Pre-Shared Key, WPA, RADIUS, or RADIUS. All devices on your network must use the same security mode in order to communicate. More...

Save Settings Cancel Changes

CISCO SYSTEMS

Step4. Four keys will be generated as shown in the above diagram.

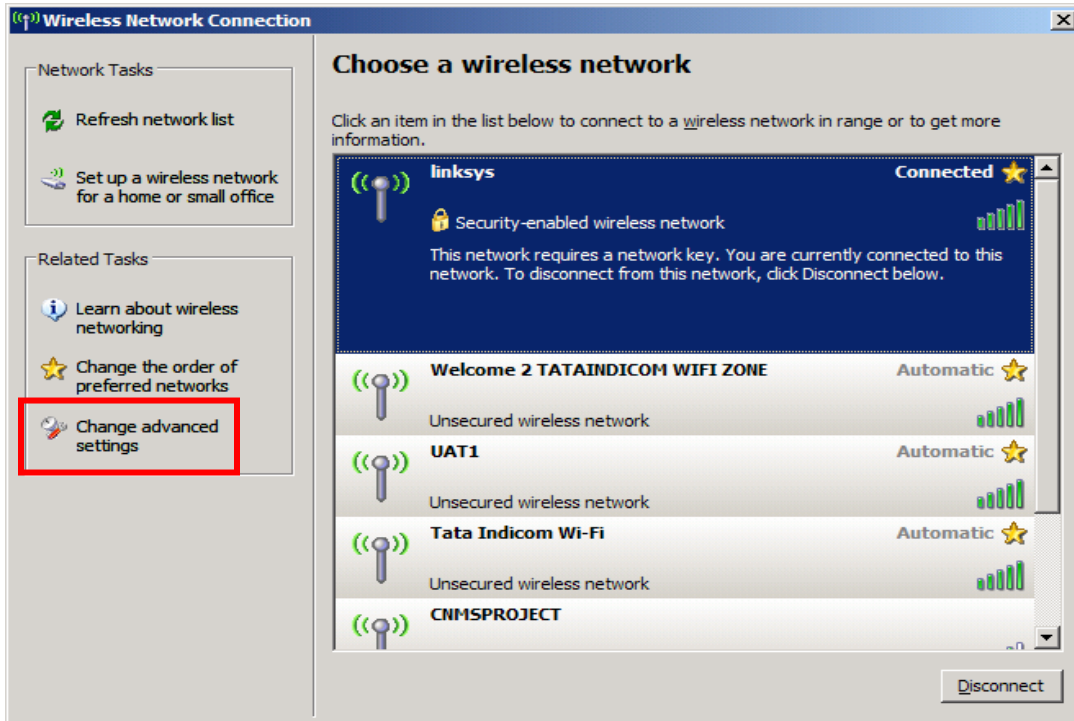
Step5. Select the key which you want to use and configure on your PC/ laptop.

Step6. Save the settings using the “**Save Settings**” tab shown above.

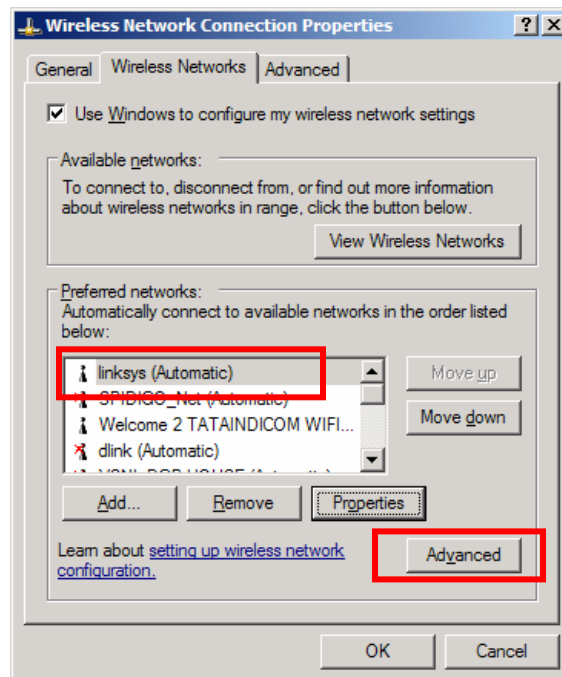
5) How to enable wireless security on Laptop/PC

Step1. Right Click on the Wireless Network Icon and choose “**View Available Wireless Connection**”.

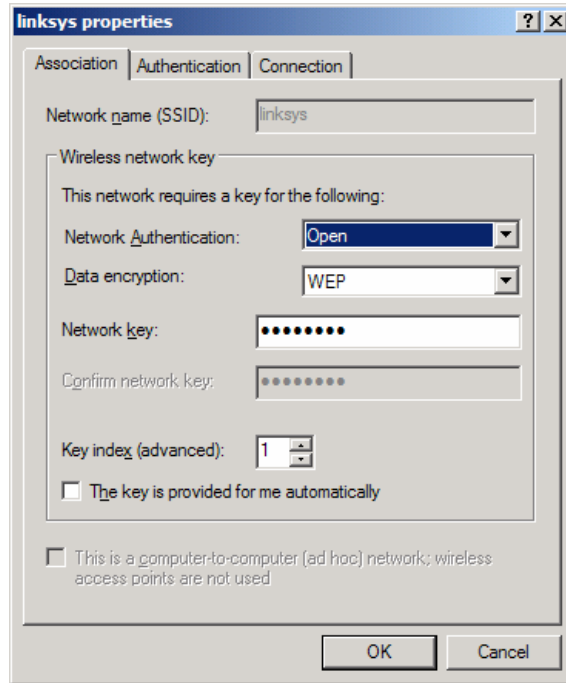
Step2. Select SSID “**linksys**” as shown below.



Step3. Click on the “**Change Advance Settings**”. Select “linksys” from the Preferred networks tab and click on “**Properties**”.



Step4. Enter the one of the four network keys as generated from the Router. Enter the same network key selected on the router to avoid mismatch.



Step5. Apply the settings and connect to the Wi-Fi using SSID “**linksys**”

If any new / additional device needs to be configured for Wi Fi access, then WEP key with the above configurations and encryption needs to be done.